

*Inspired by Mary; we
use our head, heart
and hands
to know, live and share
the joy of the gospel.*

Tuakana Team

Rooms 1, 2 and 3

July 2019



Nau Mai Haere mai, welcome back to school and to Term 3. It's going to be another busy one!

- In our faith learning, we will continue to encounter Jesus through belonging to a 'people of faith'. Our focus this term is on "Building the City of God."

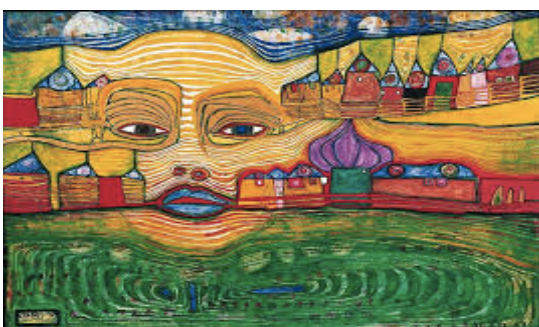
We will be investigating how we do this as part of the Church or community of believers.

- We worship God through prayer, proclaiming the Word of God and celebrate the Sacraments, especially the Eucharist on the Lord's day.
- We, the Church, are a pilgrim people on a life journey towards God.
- Since the Church began people have used their gifts to spread the Good News of Jesus.



In our other integrated inquiries (Science, Social Sciences and Technology) our focus is driven by the exciting event right on our doorstep - our new school! After discussions with the children, we will be looking into many aspects of the technologies of building.

- We will look at ancient structures, as well as modern-day and futuristic architecture. We will be looking at technologies to do with construction, including electricity and design. Our class novel, "The City of Ember" by Jeanne DuPrau, fits perfectly with these themes!
- In Maths, we will be looking with our 'Maths Eyes' at all the ways in which architects, designers, builders and related professions use Maths to solve problems.
- We will look briefly at tiles- their history, how they are constructed and used, in particular at the work of Hundertwasser, and then we will be designing and constructing our own mosaic tiles. More information shortly- we will be asking for lots of parent help with this one!
- Later in the term we will be visiting MOTAT for a hands on learning experience with electricity.



- In P.E we will be taking part in Invasion Games - games where the aim is to work as a team to attack an opponent's territory and score a goal or point.



As always, we are very appreciative of your support and interest.

HOME LEARNING:

Our Term 3 Home Learning guide sheet will be shared with the children by the end of Week 1.

We consider daily practice of reading, spelling and maths basic facts to be the most essential component of this.

ROUTINES:

- Thank you for your support in ensuring that the children are wearing the **correct winter uniform**. Watches and simple pierced earring studs may be worn. Nail polish may not be worn. Hair accessories should be simple and match the uniform ie, black, blue or white.
- **Sports uniform** will continue to be worn on **Thursdays** and when representing Marist in activities such as interschool sports. Children should come to school in their sports uniform on **Thursdays**. **In winter terms they may wear long sports pants (black or navy blue) over their shorts , but in general we encourage them to remove their track-pants for ease of movement when being active.**
- For class P.E and sports practices during the week the children wear t-shirt, shorts and appropriate footwear. They bring these to school and change at school.
- **In the winter terms, those who wish to play on the field must have a change of clothes and an old towel. It can help their organisation if they have field sports clothes in a named bag which they can keep at school for the week.**

REQUESTS:

- Newspapers and plastic containers with lids are always wanted for our art areas - if you have any going spare, we would appreciate them!
- We will be constructing models this term, so it would be good to start collecting cardboard boxes, such as shoe boxes, tubes, small wooden pieces and other 'bits 'n' pieces'.

CONTACTS:

At **Marist** we really value the **partnership** between parents, caregivers, whanau and the school to ensure every child achieves their potential. Getting to know each other and building relationships is an important part of this process.

Email is usually the best way to contact us, and we try to reply in as timely a manner as we can, but please be aware that we often do not see emails until the end of the school day, so for urgent issues it's best to make contact via the office.

Once again, we look forward to continuing our learning partnership with you and your children.

Kind regards

Rosemary Young, Marie Walker, Anne Politini and Joanna Byrne

Contact Details for Classroom Teachers

- Room 1 - Mrs Rosemary Young- (r.young@marist.school.nz) Tuakana Team Leader
- Room 2 - Mrs Marie Walker (m.walker@marist.school.nz)
Mrs Anne Politini (a.politini@marist.school.nz)
- Room 3 - Ms Joanna Byrne (j.byrne@marist.school.nz)